

Heath Tecna PMA Catalog

2/27/2012

Heath Tecna has about 140 PMA parts approved or pending approval with more parts being added to our list every month. Our goal is to create PMA parts that not only save our customers money, but improve the overall reliability and lead time of the product as well.

With decades of experience as an OEM interiors supplier, repair station, and spares distributor, we have identified key replacement parts for aircraft lavatories, galleys, overhead bins, sidewalls, and other interior components that are responsible for a large percentage of your removals.

Our engineering staff in Bellingham, WA uses state-of-the-art equipment for measurement, design, analysis and product development allowing us to redesign parts to last longer and perform better than the OEM part that it replaces. Working closely with our customers and our repair station, we identify the failure modes of each OEM part that we PMA to ensure that our design addresses any deficiencies found in the original part.

Whether it's availability, reliability, lead time, or all of these, Heath Tecna PMA parts are the solution to your procurement problems.

For more information about Heath Tecna PMA parts or to suggest a part for us to PMA, please contact us at 206-369-3049 or email us at PMA_Info@heath.com. Copyright © Heath Tecna, Inc. 2011

OEM Part Number	PMA Part Number	Description	Page
0-132-002400000	0-132-002400000HT	Catch	5
1032G54A718201	1032G54A718201HT	Door Holder Flap	5
1032G54A71820A	1032G54A71820AHT	Door Holder Housing	5
1032G54A71820	1032G54A71820HT	Door Holder Assy	5
11594	11594HT	Toilet Seat Assy Seal	20
11595	11595HT	Toilet Seat Assy Nut	21
2530-0041-01	2530-0041-01HT	Timer Switch	6
289-2-027-00	289-2-027-00HT	Wastebbox	29
5011-02-0001	5011-02-0001HT	Spring	6
5L0012000100000	5L0012000100000HT	Wastebbox	6
5L0034600106000	5L0034600106000HT	Pin	7
A2-254-0006-01	A2-254-0006-01HT-GL	Mirror A - NB (Glass)	8
A2-254-0006-01	A2-254-0006-01HT-PC	Mirror A - NB (Polycarbonate)	8
A2-254-0006-02	A2-254-0006-02HT-GL	Mirror H - NB (Glass)	8
A2-254-0006-02	A2-254-0006-02HT-PC	Mirror H - NB (Polycarbonate)	8
A2-254-0006-03	A2-254-0006-03HT-GL	Mirror D, E - NB (Glass)	9
A2-254-0006-03	A2-254-0006-03HT-PC	Mirror D, E - NB (Polycarbonate)	9
A2-254-0006-04	A2-254-0006-04HT-GL	Mirror F - NB (Glass)	9
A2-254-0006-04	A2-254-0006-04HT-PC	Mirror F - NB (Polycarbonate)	9
A2-254-0006-06	A2-254-0006-06HT-GL	Mirror A - WB (Glass)	9
A2-254-0006-06	A2-254-0006-06HT-PC	Mirror A - WB (Polycarbonate)	9
A2-254-0006-08	A2-254-0006-08HT-GL	Mirror H, N - WB (Glass)	9
A2-254-0006-08	A2-254-0006-08HT-PC	Mirror H, N - WB (Polycarbonate)	9

OEM Part Number	PMA Part Number	Description	Page
A2-254-0006-09	A2-254-0006-09HT-GL	Mirror K, J - WB (Glass)	9
A2-254-0006-09	A2-254-0006-09HT-PC	Mirror K, J - WB (Polycarbonate)	9
A2-254-0006-12	A2-254-0006-12HT-GL	Mirror Y - WB (Glass)	9
A2-254-0006-12	A2-254-0006-12HT-PC	Mirror Y - WB (Polycarbonate)	9
A2-254-0006-14	A2-254-0006-14HT-GL	Mirror U, V - WB (Glass)	9
A2-254-0006-14	A2-254-0006-14HT-PC	Mirror U, V - WB (Polycarbonate)	9
A225400224-212	A225400224-212HT	Section	7
A225400224-296	A225400224-296HT	Profile, Doorframe	10
A225400224-297	A225400224-297HT	Profile, Doorframe	10
A225400281-000	A225400281-000HT	Hinge	7
A225400427-200	A225400427-200HT	Pin	10
A225400427-202	A225400427-202HT	Flanged Pin	11
A225400429-504	A225400429-504HT	Washstand Door (2.12)	12
A225400429-554	A225400429-554HT	Washstand Door (2.12)	12
A225400429-555	A225400429-555HT	Washstand Door (2.12)	12
A225400429-558	A225400429-558HT	Washstand Door (2.18)	13
A225400429-560	A225400429-560HT	Washstand Door (2.8)	13
A225400429-561	A225400429-561HT	Washstand Door (2.8)	13
A225400429-562	A225400429-562HT	Washstand Door (2.16)	13
A225400429-563	A225400429-563HT	Washstand Door (2.16)	13
A225400429-574	A225400429-574HT	Washstand Door (2.32)	13
A225400429-578	A225400429-578HT	Washstand Door (2.24)	13
A225400429-582	A225400429-582HT	Washstand Door (12.2)	13
A225400429-583	A225400429-583HT	Washstand Door (12.2)	13
A225400429-588	A225400429-588HT	Washstand Door (2.19)	14
A225400429-606	A225400429-606HT	Washstand Door (63.23)	14
A225400429-607	A225400429-607HT	Washstand Door (63.23)	14
A225400429-704	A225400429-704HT	Washstand Door (2.16)	14
A225400429-705	A225400429-705HT	Washstand Door (2.16)	14
A225400429-710	A225400429-710HT	Washstand Door (2.32)	14
A225400429-720	A225400429-720HT	Washstand Door (63.23)	14
A225400429-721	A225400429-721HT	Washstand Door (63.23)	14
A225400429-900	A225400429-900HT	Washstand Door (12.5)	14
A225400429-901	A225400429-901HT	Washstand Door (12.5)	15
A225400437-766	A225400437-766HT	Wipe Dispenser Flap (2.16)	11
A225400454-204	A225400454-204HT	Fleece Air Filter	11
A225406429-500	A225406429-500HT	Washstand Door F (2.12)	15
A3-254-0006-200	A3-254-0006-200HT	Plastic Mirror H/K	15
A3-254-0006-202	A3-254-0006-202HT	Plastic Mirror	16
A3-254-0006-204	A3-254-0006-204HT	Plastic Mirror Y/Z	16
A3-254-0006-234	A3-254-0006-234HT	Plastic Mirror O/P	16
A3-254-0006-237	A3-254-0006-237HT	Plastic Mirror K	16
A3-254-0006-677	A3-254-0006-677HT	Plastic Mirror P Top	16
A3-254-0006-695	A3-254-0006-695HT	Plastic Mirror K Top	16
A3-254-0006-699	A3-254-0006-699HT	Plastic Mirror Z Top	16
A3-254-0006-968	A3-254-0006-968HT	Plastic Mirror Door A	17

OEM Part Number	PMA Part Number	Description	Page
A325400287-200	A325400287-200HT	Bushing	17
A325432282-200	A325432282-200HT	Pin-Damper	17
A325441458-508	A325441458-508HT	Vase	17
A425400461-600	A425400461-600HT	Toilet Seat (2.16)	19
A425400461-620	A425400461-620HT	Toilet Seat (2.19)	19
A425400461-682	A425400461-682HT	Toilet Seat (12.5)	19
A425400461-816	A425400461-816HT	Toilet Seat (5.65)	19
A425400463-504	A425400463-504HT	Toilet Lid Damper (2.16)	21
A425400463-510	A425400463-510HT	Toilet Lid Damper (2.64)	21
A425400463-512	A425400463-512HT	Toilet Lid Damper (2.32)	21
A425400463-604	A425400463-604HT	Toilet Seat Damper (2.16)	22
A425400463-610	A425400463-610HT	Toilet Seat Damper (2.64)	22
A425400463-612	A425400463-612HT	Toilet Seat Damper (2.32)	22
A425400466-504	A425400466-504HT	Toilet Seat Assy Post (2.16)	20
A425400466-512	A425400466-512HT	Toilet Seat Assy Post (2.19)	20
A425400466-578	A425400466-578HT	Toilet Seat Assy Post (12.5)	20
A425400466-620	A425400466-620HT	Toilet Seat Assy Post (5.65)	20
A425400467-704	A425400467-704HT	Toilet Seat Assy (2.16)	18
A425400467-712	A425400467-712HT	Toilet Seat Assy (2.19)	18
A425400467-778	A425400467-778HT	Toilet Seat Assy (12.5)	18
A425400467-818	A425400467-818HT	Toilet Seat Assy (5.65)	19
A425400468-504	A425400468-504HT	Toilet Lid (2.16)	19
A425400468-512	A425400468-512HT	Toilet Lid (2.19)	19
A425400468-578	A425400468-578HT	Toilet Lid (12.5)	20
A425400468-610	A425400468-610HT	Toilet Lid (5.65)	20
A825400469-500	A825400469-500HT	Toilet Lid Damper (2.16)	22
A825400469-520	A825400469-520HT	Toilet Lid Damper (2.32)	22
A825400469-560	A825400469-560HT	Toilet Seat Damper (4.23)	22
A825400469-562	A825400469-562HT	Toilet Lid Damper (5.65)	22
A825400469-600	A825400469-600HT	Toilet Seat Damper (2.16)	23
A825400469-620	A825400469-620HT	Toilet Seat Damper (2.32)	23
A825400469-660	A825400469-660HT	Toilet Lid Damper (4.23)	23
A825400469-662	A825400469-662HT	Toilet Seat Damper (5.65)	23
A825400669-500	A825400669-500HT	Toilet Lid Damper (2.16)	23
A825400669-520	A825400669-520HT	Toilet Lid Damper (2.32)	23
A825400669-560	A825400669-560HT	Toilet Seat Damper (4.23)	23
A825400669-562	A825400669-562HT	Toilet Lid Damper (5.65)	24
A825400669-600	A825400669-600HT	Toilet Seat Damper (2.16)	24
A825400669-620	A825400669-620HT	Toilet Seat Damper (2.32)	24
A825400669-660	A825400669-660HT	Toilet Lid Damper (4.23)	24
A825400669-662	A825400669-662HT	Toilet Seat Damper (5.65)	24
DCIN154-002	DCIN154-002HT	Soap Dispenser Assy	25
Replaces HT Bottle Only	DCIN154-002HT-001	Soap Dispenser Bottle	25
Replaces HT Pump Only	DCIN154-002HT-003	Soap Dispenser Pump	25
DCIN171-2-11	DCIN171-2-11HT	Retainer (2.11)	25
DCIN171-2-16	DCIN171-2-16HT	Retainer (2.16)	25

OEM Part Number	PMA Part Number	Description	Page
DCIN171-2-22	DCIN171-2-22HT	Retainer (2.22)	26
DCIN171-2-53	DCIN171-2-53HT	Retainer (2.53)	26
DCIN171-2-69	DCIN171-2-69HT	Retainer (2.69)	26
DCIN171-3-36	DCIN171-3-36HT	Retainer (3.36)	26
DCIN172-2-11	DCIN172-2-11HT	Bumper (2.11)	26
DCIN172-2-16	DCIN172-2-16HT	Bumper (2.16)	26
DCIN172-2-22	DCIN172-2-22HT	Bumper (2.22)	27
DCIN172-2-53	DCIN172-2-53HT	Bumper (2.53)	27
DCIN172-2-69	DCIN172-2-69HT	Bumper (2.69)	27
DCIN172-3-36	DCIN172-3-36HT	Bumper (3.36)	27
DCIN173-2-11	DCIN173-2-11HT	Endcap (2.11)	27
DCIN173-2-16	DCIN173-2-16HT	Endcap (2.16)	27
DCIN173-2-22	DCIN173-2-22HT	Endcap (2.22)	28
DCIN173-2-53	DCIN173-2-53HT	Endcap (2.53)	28
DCIN173-2-69	DCIN173-2-69HT	Endcap (2.69)	28
DCIN173-3-36	DCIN173-3-36HT	Endcap (3.36)	28
DCIN173-5-67	DCIN173-5-67HT	Endcap (5.67)	28
DCIN173-5-71	DCIN173-5-71HT	Endcap (5.71)	28
DSL3000-901	DSL3000-901HT	Damper	24
TS340-00-62	TS340-00-62HT	Plate	29

OEM Part Number 0-132-002400000
 OEM Description CATCH
 OEM Sell
 PMA Part Number 0-132-002400000HT
 PMA Description Catch
 Price Call for a quote
 Lead Time Call for lead time
 Improvements Over OEM Higher strength material (7075-T6)
 Notes Candy apple red
 Effectivity B737-300, -400, -500, -600, -700, -800, -900, B747-200, -300, -400, B757-200, B767-200, -300, -400ER, B777-200, -300, A300 B4-605R, A320-211, A330-323, A340-311, -313, MD-90-30



OEM Part Number 1032G54A71820
 OEM Description DOOR HOLDER ASSY
 OEM Sell
 PMA Part Number 1032G54A71820HT
 PMA Description Door Holder Assy
 Price Call for a quote
 Lead Time Call for lead time
 Improvements Over OEM Higher strength material (6061-T6)
 Effectivity B777-200, -200LR, -300, -300ER



OEM Part Number 1032G54A718201
 OEM Description DOOR HOLDER FLAP1X
 OEM Sell
 PMA Part Number 1032G54A718201HT
 PMA Description Door Holder Flap
 Price Call for a quote
 Lead Time Call for lead time
 Improvements Over OEM Higher strength material (6061-T6)
 Notes Handle only plus hinge
 Effectivity B777-200, -200LR, -300, -300ER

OEM Part Number 1032G54A71820A
 OEM Description HOUSING
 OEM Sell
 PMA Part Number 1032G54A71820AHT
 PMA Description Door Holder Housing
 Price Call for a quote
 Lead Time Call for lead time
 Improvements Over OEM Higher strength material (6061-T6)
 Notes Base only
 Effectivity B777-200, -200LR, -300, -300ER

OEM Part Number 2530-0041-01
 OEM Description TIMER SWITCH
 OEM B/E Aerospace
 PMA Part Number 2530-0041-01HT
 PMA Description Timer Switch
 Price Call for a quote
 Lead Time Call for lead time
 Improvements Over OEM Identical from the same manufacturer
 Notes Used on B/E Aerospace ovens
 Effectivity A319-112, -113, -114, -131, A320-111, -211, -212, -231, -232, -233, B747-400, B757-200, B767-300, B777-200



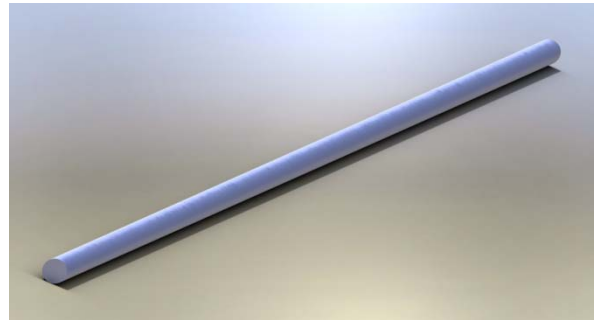
OEM Part Number 5011-02-0001
 OEM Description SPRING
 OEM Dasell & Sell
 PMA Part Number 5011-02-0001HT
 PMA Description Spring
 Price Call for a quote
 Lead Time Call for lead time
 Improvements Over OEM Identical
 Effectivity A300 B4-605R, B727-200, B737-100, -200, -300, -400, -500, -600, -700, -800, -900, B747-200, -300, -400, B757-200, B767-200, -300, -300F, B777-200, -300, A320-211, A321-211, A330-223, -243, -323, -343, A340-311, -313, DC-9-82, DC-9-83, DC-9-87, MD-90-30



OEM Part Number 5L0012000100000
 OEM Description WASTEBOX
 OEM Dasell
 PMA Part Number 5L0012000100000HT
 PMA Description Wastebox
 Price Call for a quote
 Lead Time Call for lead time
 Improvements Over OEM Similar
 Effectivity A318-111, -112, -121, A319-111, -112, -113, -114, -115, -131, -132, -133, A320-111, -211, -212, -214, -216, -231, -232, -233, A321-111, -112, -131, -211, -212, -213, -231, -232, A330-202, -203, -223, -243, -301, -302, -321, -322, -323, -341, -342, -343, A340-311, -313

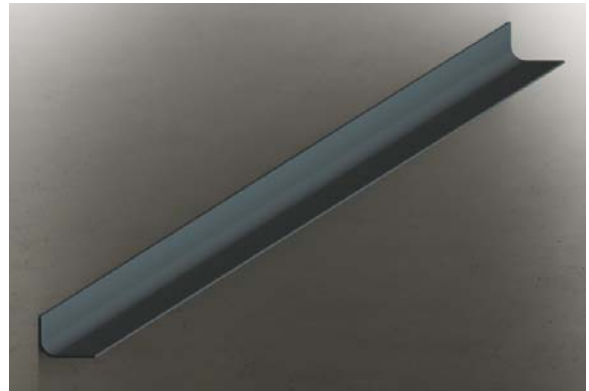


OEM Part Number 5L0034600106000
 OEM Description PIN
 OEM Dasell
 PMA Part Number 5L0034600106000HT
 PMA Description Pin
 Price Call for a quote
 Lead Time Call for lead time
 Improvements Over OEM Significantly higher strength material. Upgraded from plastic to 6061



Effectivity A318-111, A319-111, -112, -113, -114, -115, -131, -132, -133, A320-211, -212, -214, -216, -231, -232, -233, A321-111, -112, -131, -211, -212, -213, -231, -232, A330-202, -223, -243, -301, -302, -322, -342, -343, A340-311, -313

OEM Part Number A225400224-212
 OEM Description SECTION
 OEM Dasell
 PMA Part Number A225400224-212HT
 PMA Description Section
 Price Call for a quote
 Lead Time Call for lead time



Improvements Over OEM Higher strength material (6061-T6511)
 Effectivity A319-111, -112, -113, -114, -115, -131, -132, -133, A320-211, -212, -214, -231, -232, -233, A321-111, -112, -131, -211, -212, -231, A330-203, -223, -243, -323, -343

OEM Part Number A225400281-000
 OEM Description HINGE
 OEM Dasell
 PMA Part Number A225400281-000HT
 PMA Description Hinge
 Price Call for a quote
 Lead Time Call for lead time
 Improvements Over OEM Identical



Effectivity A319-112, -114, -131, -132, A320-211, -212, -214, -232, -233, A321-211, -213, -231, A330-202, -203, -223, -243, -301, -302, -321, -322, -323, -341, -342, -343, A340-311, -313, -642

OEM Part Number	A2-254-0006-()
OEM Description	MIRROR
OEM	Dasell
Lead Time	Call for lead time
Improvements Over OEM	Upgraded to Cat II shatter-proofing (glass option) and available with a polycarbonate mirror instead of glass.
Notes	Available with either glass or polycarbonate mirror designated as GL or PC in the part number, respectively. The weight savings for the polycarbonate option are as follows: -01 = 1.8 lbs, -02 = 3.0 lbs, -03 = 3.1 lbs, -04 = 3.1 lbs, -06 = 1.5 lbs, -08 = 2.6 lbs, -09 = 2.6 lbs, -12 = 2.4 lbs, and -14 = 2.4 lbs.
Effectivity	A318-111, -112, -121, A319-111, -112, -113, -114, -115, -131, -132, -133, A320-111, -211, -212, -214, -216, -231, -232, -233, A321-111, -112, -131, -211, -212, -213, -231, -232, A330-202, -203, -223, -243, -301, -302, -321, -322, -323, -341, -342, -343, A340-311, -313



OEM Part Number	A2-254-0006-01
OEM Description	MIRROR A (NB)
PMA Part Number	A2-254-0006-01HT-GL / A2-254-0006-01HT-PC
PMA Description	Mirror A - NB (Glass) / Mirror A - NB (Polycarbonate)
Price	Call for a quote

OEM Part Number	A2-254-0006-02
OEM Description	MIRROR H (NB)
PMA Part Number	A2-254-0006-02HT-GL / A2-254-0006-02HT-PC
PMA Description	Mirror H - NB (Glass) / Mirror H - NB (Polycarbonate)
Price	Call for a quote

OEM Part Number A2-254-0006-03
OEM Description MIRROR D,E(NB)
PMA Part Number A2-254-0006-03HT-GL / A2-254-0006-03HT-PC
PMA Description Mirror D, E - NB (Glass) / Mirror D, E - NB (Polycarbonate)
Price Call for a quote

OEM Part Number A2-254-0006-04
OEM Description MIRROR F (NB)
PMA Part Number A2-254-0006-04HT-GL / A2-254-0006-04HT-PC
PMA Description Mirror F - NB (Glass) / Mirror F - NB (Polycarbonate)
Price Call for a quote

OEM Part Number A2-254-0006-06
OEM Description MIRROR A (WB)
PMA Part Number A2-254-0006-06HT-GL / A2-254-0006-06HT-PC
PMA Description Mirror A - WB (Glass) / Mirror A - WB (Polycarbonate)
Price Call for a quote

OEM Part Number A2-254-0006-08
OEM Description MIRROR H,N(WB)
PMA Part Number A2-254-0006-08HT-GL / A2-254-0006-08HT-PC
PMA Description Mirror H, N - WB (Glass) / Mirror H, N - WB (Polycarbonate)
Price Call for a quote

OEM Part Number A2-254-0006-09
OEM Description MIRROR K,J(WB)
PMA Part Number A2-254-0006-09HT-GL / A2-254-0006-09HT-PC
PMA Description Mirror K, J - WB (Glass) / Mirror K, J - WB (Polycarbonate)
Price Call for a quote

OEM Part Number A2-254-0006-12
OEM Description MIRROR Y (WB)
PMA Part Number A2-254-0006-12HT-GL / A2-254-0006-12HT-PC
PMA Description Mirror Y - WB (Glass) / Mirror Y - WB (Polycarbonate)
Price Call for a quote

OEM Part Number A2-254-0006-14
OEM Description MIRROR U,V (WB)
PMA Part Number A2-254-0006-14HT-GL / A2-254-0006-14HT-PC
PMA Description Mirror U, V - WB (Glass) / Mirror U, V - WB (Polycarbonate)
Price Call for a quote

OEM Part Number A225400224-296
 OEM Description PROFILE
 OEM Dasell
 PMA Part Number A225400224-296HT
 PMA Description Profile, Doorframe
 Price Call for a quote
 Lead Time Call for lead time
 Improvements Over OEM Higher strength material (6061-T6511)
 Notes Mirror opposite of A225400224-297
 Effectivity A319-111, -112, -114, -115, -131, -132, -133, A320-211, -212, -214, -232, -233, A321-211, -213, -231, A330-202, -203, -223, -243, -301, -302, -303, -321, -322, -323, -342, -343, A340-311, -313, -642



OEM Part Number A225400224-297
 OEM Description PROFILE,DOORFRAME
 OEM Dasell
 PMA Part Number A225400224-297HT
 PMA Description Profile, Doorframe
 Price Call for a quote
 Lead Time Call for lead time
 Improvements Over OEM Higher strength material (6061-T6511)
 Notes Mirror opposite of A225400224-296
 Effectivity A319-111, -112, -114, -115, -131, -132, -133, A320-211, -212, -214, -232, -233, A321-211, -213, -231, A330-202, -203, -223, -243, -301, -302, -303, -321, -322, -323, -342, -343, A340-311, -313, -642



OEM Part Number A225400427-200
 OEM Description PIN
 OEM Dasell
 PMA Part Number A225400427-200HT
 PMA Description Pin
 Price Call for a quote
 Lead Time Call for lead time
 Improvements Over OEM Similar
 Effectivity A318-111, -112, -121, A319-111, -112, -113, -114, -115, -131, -132, -133, A320-111, -211, -212, -214, -216, -232, -233, A321-131, -211, -212, -213, -231, -232, A330-202, -203, -223, -243, -322, -323, -342, -343, A340-313



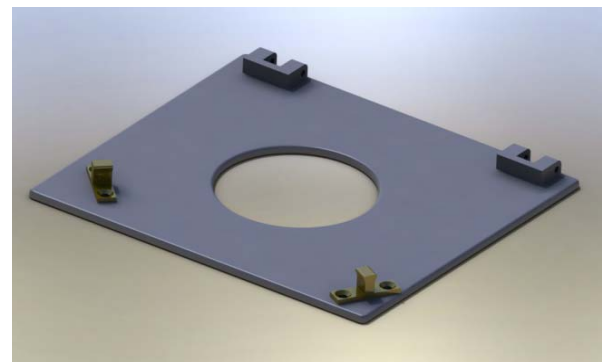
OEM Part Number	A225400427-202
OEM Description	PIN
OEM	Dasell
PMA Part Number	A225400427-202HT
PMA Description	Flanged Pin
Price	Call for a quote
Lead Time	Call for lead time
Improvements Over OEM	Similar
Effectivity	A318-111, -112, -121, A319-111, -112, -113, -114, -115, -131, -132, -133, A320-111, -211, -212, -214, -216, -232, -233, A321-131, -211, -212, -213, -231, -232, A330-202, -203, -223, -243, -322, -323, -342, -343, A340-313



OEM Part Number	A225400454-204
OEM Description	FLEECE / AIRFILTER
OEM	Dasell
PMA Part Number	A225400454-204HT
PMA Description	Fleece Air Filter
Price	Call for a quote
Lead Time	Call for lead time
Improvements Over OEM	Identical
Effectivity	A318-111, -112, -121, A319-111, -112, -113, -114, -115, -131, -132, -133, A320-111, -211, -212, -214, -216, -232, -233, A321-111, -112, -131, -211, -212, -213, -231, -232, A330-202, -203, -223, -243, -302, -322, -323, -342, -343, A340-311, -313



OEM Part Number	A225400437-766
OEM Description	SHUTTER CPL. WIPE DISP. (2.16)
OEM	Dasell
PMA Part Number	A225400437-766HT
PMA Description	Wipe Dispenser Flap (2.16)
Price	Call for a quote
Lead Time	Call for lead time
Improvements Over OEM	Similar
Effectivity	A319-115, -132, A320-214, -232



OEM Part Number	A225400429-()
OEM Description	WASHSTAND DOOR
OEM	Dasell
Lead Time	Call for lead time
Improvements Over OEM	Similar
Effectivity	A318-111, -112, -121, A319-111, -112, -113, -114, -115, -131, -132, -133, A320-111, -211, -212, -214, -216, -232, -233, A321-131, -211, -212, -213, -231, -232, A330-202, -203, -223, -243, -322, -323, -342, -343, A340-313



OEM Part Number	A225400429-504
PMA Part Number	A225400429-504HT
PMA Description	Washstand Door (2.12)
Price	Call for a quote

OEM Part Number	A225400429-554
PMA Part Number	A225400429-554HT
PMA Description	Washstand Door (2.12)
Price	Call for a quote

OEM Part Number	A225400429-555
PMA Part Number	A225400429-555HT
PMA Description	Washstand Door (2.12)
Price	Call for a quote

OEM Part Number A225400429-558
PMA Part Number A225400429-558HT
PMA Description Washstand Door (2.18)
Price Call for a quote

OEM Part Number A225400429-560
PMA Part Number A225400429-560HT
PMA Description Washstand Door (2.8)
Price Call for a quote

OEM Part Number A225400429-561
PMA Part Number A225400429-561HT
PMA Description Washstand Door (2.8)
Price Call for a quote

OEM Part Number A225400429-562
PMA Part Number A225400429-562HT
PMA Description Washstand Door (2.16)
Price Call for a quote

OEM Part Number A225400429-563
PMA Part Number A225400429-563HT
PMA Description Washstand Door (2.16)
Price Call for a quote

OEM Part Number A225400429-574
PMA Part Number A225400429-574HT
PMA Description Washstand Door (2.32)
Price Call for a quote

OEM Part Number A225400429-578
PMA Part Number A225400429-578HT
PMA Description Washstand Door (2.24)
Price Call for a quote

OEM Part Number A225400429-582
PMA Part Number A225400429-582HT
PMA Description Washstand Door (12.2)
Price Call for a quote

OEM Part Number A225400429-583
PMA Part Number A225400429-583HT
PMA Description Washstand Door (12.2)
Price Call for a quote

OEM Part Number A225400429-588
PMA Part Number A225400429-588HT
PMA Description Washstand Door (2.19)
Price Call for a quote

OEM Part Number A225400429-606
PMA Part Number A225400429-606HT
PMA Description Washstand Door (63.23)
Price Call for a quote

OEM Part Number A225400429-607
PMA Part Number A225400429-607HT
PMA Description Washstand Door (63.23)
Price Call for a quote

OEM Part Number A225400429-704
PMA Part Number A225400429-704HT
PMA Description Washstand Door (2.16)
Price Call for a quote

OEM Part Number A225400429-705
PMA Part Number A225400429-705HT
PMA Description Washstand Door (2.16)
Price Call for a quote

OEM Part Number A225400429-710
PMA Part Number A225400429-710HT
PMA Description Washstand Door (2.32)
Price Call for a quote

OEM Part Number A225400429-720
PMA Part Number A225400429-720HT
PMA Description Washstand Door (63.23)
Price Call for a quote

OEM Part Number A225400429-721
PMA Part Number A225400429-721HT
PMA Description Washstand Door (63.23)
Price Call for a quote

OEM Part Number A225400429-900
PMA Part Number A225400429-900HT
PMA Description Washstand Door (12.5)
Price Call for a quote

OEM Part Number A225400429-901
PMA Part Number A225400429-901HT
PMA Description Washstand Door (12.5)
Price Call for a quote
Notes Keyed latch

OEM Part Number A225406429-500
OEM Description WASHSTAND DOOR F
OEM Dasell
PMA Part Number A225406429-500HT
PMA Description Washstand Door F (2.12)
Price Call for a quote
Lead Time Call for lead time
Improvements Over OEM Similar
Effectivity A319-131, A320-232



OEM Part Number A3-254-0006-()
OEM Dasell
Lead Time Call for lead time
Improvements Over OEM Similar
Effectivity A330-202, -203, -223, -243, -301, -302, -303, -323, -342, -343



OEM Part Number A3-254-0006-200
OEM Description MIRROR H/K
PMA Part Number A3-254-0006-200HT
PMA Description Plastic Mirror H/K
Price Call for a quote

OEM Part Number A3-254-0006-202
OEM Description MIRROR H/K
PMA Part Number A3-254-0006-202HT
PMA Description Plastic Mirror H/K
Price Call for a quote

OEM Part Number A3-254-0006-204
OEM Description MIRROR Y/Z
PMA Part Number A3-254-0006-204HT
PMA Description Plastic Mirror Y/Z
Price Call for a quote

OEM Part Number A3-254-0006-234
OEM Description MIRRORDOOR O/P
PMA Part Number A3-254-0006-234HT
PMA Description Plastic Mirror O/P
Price Call for a quote

OEM Part Number A3-254-0006-237
OEM Description MIRROR K
PMA Part Number A3-254-0006-237HT
PMA Description Plastic Mirror K
Price Call for a quote

OEM Part Number A3-254-0006-677
OEM Description MIRROR P TOP
PMA Part Number A3-254-0006-677HT
PMA Description Plastic Mirror P Top
Price Call for a quote

OEM Part Number A3-254-0006-695
OEM Description MIRROR K AT THE TOP
PMA Part Number A3-254-0006-695HT
PMA Description Plastic Mirror K Top
Price Call for a quote

OEM Part Number A3-254-0006-699
OEM Description MIRROR Z AT THE TOP
PMA Part Number A3-254-0006-699HT
PMA Description Plastic Mirror Z Top
Price Call for a quote

OEM Part Number A3-254-0006-968
 OEM Description MIRRORDOOR A
 PMA Part Number A3-254-0006-968HT
 PMA Description Plastic Mirror Door A
 Price Call for a quote

OEM Part Number A325400287-200
 OEM Description BUSHING
 OEM Dasell
 PMA Part Number A325400287-200HT
 PMA Description Bushing
 Price Call for a quote
 Lead Time Call for lead time
 Improvements Over OEM More durable material (glass-filled Delrin)
 Effectivity A319-112, -114, -131, -132, A320-111, -211, -212, -214, -232, -233, A321-111, -131, -211, -213, -214, -231, A330-202, -203, -223, -243, -302, -303, -323, -342, -343, A340-311, -313, -642



OEM Part Number A325432282-200
 OEM Description PIN-DAMPER
 OEM Dasell
 PMA Part Number A325432282-200HT
 PMA Description Pin-Damper
 Price Call for a quote
 Lead Time Call for lead time
 Improvements Over OEM Higher strength material (7075-T6)
 Effectivity A330-202, -203, -223, -243, -301, -302, -303, -323, -343, A340-313



OEM Part Number A325441458-508
 OEM Description VASE
 OEM Dasell
 PMA Part Number A325441458-508HT
 PMA Description Vase
 Price Call for a quote
 Lead Time Call for lead time
 Improvements Over OEM Higher strength material (6061-T6)
 Effectivity A330-202, -223, -243, -343



OEM Part Number	A42540046()-()
OEM Description	SEAT ASSY, TOILET
OEM	Dasell
Lead Time	Call for lead time
Improvements Over OEM	Similar
Notes	Components of assemblies can be purchased separately
Effectivity	A318-111, -112, -121, A319-111, -112, -113, -114, -115, -131, -132, -133, A320-211, -212, -214, -216, -231, -232, -233, A321-211, -212, -213, -231, -232, A330-203, -243, -323, -343, A340-313, B737-300, -400, B757-200, B767-200



OEM Part Number	A425400467-704
OEM Description	SEAT ASSY, TOILET
PMA Part Number	A425400467-704HT
PMA Description	Toilet Seat Assy (2.16)
Price	Call for a quote

OEM Part Number	A425400467-712
OEM Description	SEAT ASSY, TOILET
PMA Part Number	A425400467-712HT
PMA Description	Toilet Seat Assy (2.19)
Price	Call for a quote

OEM Part Number	A425400467-778
OEM Description	SEAT ASSY, TOILET
PMA Part Number	A425400467-778HT
PMA Description	Toilet Seat Assy (12.5)
Price	Call for a quote

OEM Part Number A425400467-818
OEM Description SEAT ASSY, TOILET
PMA Part Number A425400467-818HT
PMA Description Toilet Seat Assy (5.65)
Price Call for a quote

OEM Part Number A425400461-600
OEM Description TOILET SEAT
PMA Part Number A425400461-600HT
PMA Description Toilet Seat (2.16)
Price Call for a quote

OEM Part Number A425400461-620
OEM Description TOILET SEAT
PMA Part Number A425400461-620HT
PMA Description Toilet Seat (2.19)
Price Call for a quote

OEM Part Number A425400461-682
OEM Description TOILET SEAT
PMA Part Number A425400461-682HT
PMA Description Toilet Seat (12.5)
Price Call for a quote

OEM Part Number A425400461-816
OEM Description TOILET SEAT
PMA Part Number A425400461-816HT
PMA Description Toilet Seat (5.65)
Price Call for a quote

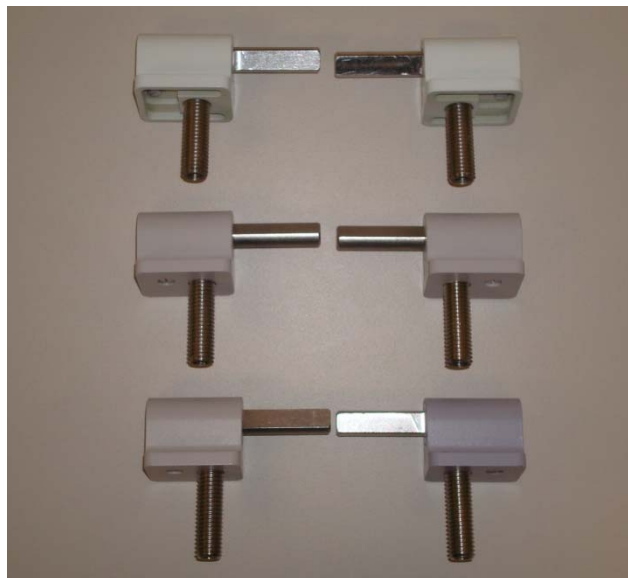
OEM Part Number A425400468-504
OEM Description TOILET LID
PMA Part Number A425400468-504HT
PMA Description Toilet Lid (2.16)
Price Call for a quote

OEM Part Number A425400468-512
OEM Description TOILET LID
PMA Part Number A425400468-512HT
PMA Description Toilet Lid (2.19)
Price Call for a quote

OEM Part Number	A425400468-578
OEM Description	TOILET LID
PMA Part Number	A425400468-578HT
PMA Description	Toilet Lid (12.5)
Price	Call for a quote
OEM Part Number	A425400468-610
OEM Description	TOILET LID
PMA Part Number	A425400468-610HT
PMA Description	Toilet Lid (5.65)
Price	Call for a quote
OEM Part Number	A425400466-504
OEM Description	HINGE POST
PMA Part Number	A425400466-504HT
PMA Description	Toilet Seat Assy Post (2.16)
Price	Call for a quote
OEM Part Number	A425400466-512
OEM Description	HINGE POST
PMA Part Number	A425400466-512HT
PMA Description	Toilet Seat Assy Post (2.19)
Price	Call for a quote
OEM Part Number	A425400466-578
OEM Description	HINGE POST
PMA Part Number	A425400466-578HT
PMA Description	Toilet Seat Assy Post (12.5)
Price	Call for a quote
OEM Part Number	A425400466-620
OEM Description	HINGE POST
PMA Part Number	A425400466-620HT
PMA Description	Toilet Seat Assy Post (5.65)
Price	Call for a quote
OEM Part Number	11594
OEM Description	SEAL
PMA Part Number	11594HT
PMA Description	Toilet Seat Assy Seal
Price	Call for a quote

OEM Part Number	11595
OEM Description	NUT
PMA Part Number	11595HT
PMA Description	Toilet Seat Assy Nut
Price	Call for a quote

OEM Part Number	A425400463-() & A825400()69-()
OEM Description	SPRING TOILET COVER, SPRING TOILET SEAT & DAMPER
OEM	Dasell
Lead Time	Call for lead time
Improvements Over OEM	Upgraded to a brass housing to solve corrosion problems.
Effectivity	A330-202, -203, -223, -243, -243F, -302, -303, -323, -342, -343, A340-642



OEM Part Number	A425400463-504
OEM Description	SPRING TOILET COVER
PMA Part Number	A425400463-504HT
PMA Description	Toilet Lid Damper (2.16)
Price	Call for a quote

OEM Part Number	A425400463-510
OEM Description	SPRING TOILET COVER
PMA Part Number	A425400463-510HT
PMA Description	Toilet Lid Damper (2.64)
Price	Call for a quote

OEM Part Number	A425400463-512
OEM Description	SPRING TOILET COVER
PMA Part Number	A425400463-512HT
PMA Description	Toilet Lid Damper (2.32)
Price	Call for a quote

OEM Part Number A425400463-604
OEM Description SPRING TOILET SEAT
PMA Part Number A425400463-604HT
PMA Description Toilet Seat Damper (2.16)
Price Call for a quote

OEM Part Number A425400463-610
OEM Description SPRING TOILET SEAT
PMA Part Number A425400463-610HT
PMA Description Toilet Seat Damper (2.64)
Price Call for a quote

OEM Part Number A425400463-612
OEM Description SPRING TOILET SEAT
PMA Part Number A425400463-612HT
PMA Description Toilet Seat Damper (2.32)
Price Call for a quote

OEM Part Number A825400469-500
OEM Description DAMPER
PMA Part Number A825400469-500HT
PMA Description Toilet Lid Damper (2.16)
Price Call for a quote

OEM Part Number A825400469-520
OEM Description DAMPER
PMA Part Number A825400469-520HT
PMA Description Toilet Lid Damper (2.32)
Price Call for a quote

OEM Part Number A825400469-560
OEM Description DAMPER
PMA Part Number A825400469-560HT
PMA Description Toilet Seat Damper (4.23)
Price Call for a quote

OEM Part Number A825400469-562
OEM Description DAMPER
PMA Part Number A825400469-562HT
PMA Description Toilet Lid Damper (5.65)
Price Call for a quote

OEM Part Number A825400469-600
OEM Description DAMPER
PMA Part Number A825400469-600HT
PMA Description Toilet Seat Damper (2.16)
Price Call for a quote

OEM Part Number A825400469-620
OEM Description DAMPER
PMA Part Number A825400469-620HT
PMA Description Toilet Seat Damper (2.32)
Price Call for a quote

OEM Part Number A825400469-660
OEM Description DAMPER
PMA Part Number A825400469-660HT
PMA Description Toilet Lid Damper (4.23)
Price Call for a quote

OEM Part Number A825400469-662
OEM Description DAMPER
PMA Part Number A825400469-662HT
PMA Description Toilet Seat Damper (5.65)
Price Call for a quote

OEM Part Number A825400669-500
OEM Description DAMPER
PMA Part Number A825400669-500HT
PMA Description Toilet Lid Damper (2.16)
Price Call for a quote

OEM Part Number A825400669-520
OEM Description DAMPER
PMA Part Number A825400669-520HT
PMA Description Toilet Lid Damper (2.32)
Price Call for a quote

OEM Part Number A825400669-560
OEM Description DAMPER
PMA Part Number A825400669-560HT
PMA Description Toilet Seat Damper (4.23)
Price Call for a quote

OEM Part Number A825400669-562
OEM Description DAMPER
PMA Part Number A825400669-562HT
PMA Description Toilet Lid Damper (5.65)
Price Call for a quote

OEM Part Number A825400669-600
OEM Description DAMPER
PMA Part Number A825400669-600HT
PMA Description Toilet Seat Damper (2.16)
Price Call for a quote

OEM Part Number A825400669-620
OEM Description DAMPER
PMA Part Number A825400669-620HT
PMA Description Toilet Seat Damper (2.32)
Price Call for a quote

OEM Part Number A825400669-660
OEM Description DAMPER
PMA Part Number A825400669-660HT
PMA Description Toilet Lid Damper (4.23)
Price Call for a quote

OEM Part Number A825400669-662
OEM Description DAMPER
PMA Part Number A825400669-662HT
PMA Description Toilet Seat Damper (5.65)
Price Call for a quote

OEM Part Number DSL3000-901
OEM Description DAMPER
OEM Dasell
PMA Part Number DSL3000-901HT
PMA Description Damper
Price Call for a quote
Lead Time Call for lead time
Effectivity A330-202, -203, -223, -243, -243F, -302, -323, -342, -343, A340-642



OEM Part Number DCIN154-002
 OEM Description DISPENSER ASSY-SOAP
 OEM Dasell
 PMA Part Number DCIN154-002HT
 PMA Description Soap Dispenser Assy
 Price Call for a quote
 Lead Time Call for lead time
 Improvements Over OEM Similar
 Effectivity



A318-111, -112, -121, A319-111, -112, -114, -115, -131, -132, -133, A320-211, -212, -214, -216, -232, -233, A321-211, -213, -231, -232, A330-202, -243, -323, -342, -343, A340-311, -313, -642

PMA Part Number DCIN154-002HT-001
 PMA Description Soap Dispenser Bottle
 Price Call for a quote
 Notes Replacement bottle for DCIN154-002HT (will not fit OEM assembly).

PMA Part Number DCIN154-002HT-003
 PMA Description Soap Dispenser Pump
 Price Call for a quote
 Notes Replacement pump for DCIN154-002HT (will not fit OEM assembly).

OEM Part Number DCIN171-()-()
 OEM Description RETAINER
 OEM Dasell
 Lead Time Call for lead time
 Improvements Over OEM Similar
 Effectivity A330-202, -223, -243, -243F, -342, -343, A340-313, A380-842

OEM Part Number DCIN171-2-11
 OEM Description RETAINER
 PMA Part Number DCIN171-2-11HT
 PMA Description Retainer (2.11)
 Price Call for a quote

OEM Part Number DCIN171-2-16
 OEM Description RETAINER
 PMA Part Number DCIN171-2-16HT
 PMA Description Retainer (2.16)
 Price Call for a quote



OEM Part Number DCIN171-2-22
OEM Description RETAINER
PMA Part Number DCIN171-2-22HT
PMA Description Retainer (2.22)
Price Call for a quote

OEM Part Number DCIN171-2-53
OEM Description RETAINER
PMA Part Number DCIN171-2-53HT
PMA Description Retainer (2.53)
Price Call for a quote

OEM Part Number DCIN171-2-69
OEM Description RETAINER
PMA Part Number DCIN171-2-69HT
PMA Description Retainer (2.69)
Price Call for a quote

OEM Part Number DCIN171-3-36
OEM Description RETAINER
PMA Part Number DCIN171-3-36HT
PMA Description Retainer (3.36)
Price Call for a quote

OEM Part Number DCIN172-()-()
OEM Description BUMPER
OEM Dasell
Lead Time Call for lead time
Improvements Over OEM Similar
Effectivity A330-202, -223, -243, -243F, -342, -343, A340-313, A380-842

OEM Part Number DCIN172-2-11
OEM Description BUMPER
PMA Part Number DCIN172-2-11HT
PMA Description Bumper (2.11)
Price Call for a quote

OEM Part Number DCIN172-2-16
OEM Description BUMPER
PMA Part Number DCIN172-2-16HT
PMA Description Bumper (2.16)
Price Call for a quote

OEM Part Number DCIN172-2-22
OEM Description BUMPER
PMA Part Number DCIN172-2-22HT
PMA Description Bumper (2.22)
Price Call for a quote

OEM Part Number DCIN172-2-53
OEM Description BUMPER
PMA Part Number DCIN172-2-53HT
PMA Description Bumper (2.53)
Price Call for a quote

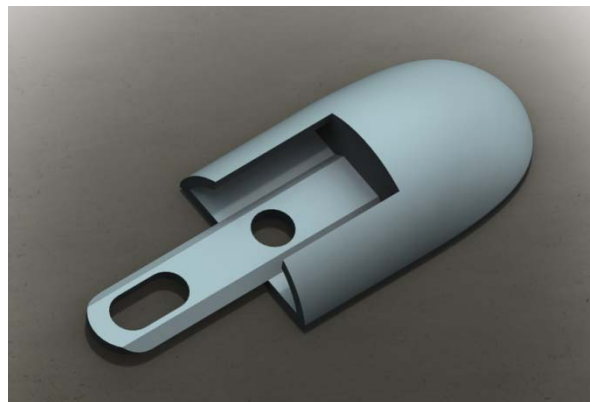
OEM Part Number DCIN172-2-69
OEM Description BUMPER
PMA Part Number DCIN172-2-69HT
PMA Description Bumper (2.69)
Price Call for a quote

OEM Part Number DCIN172-3-36
OEM Description BUMPER
PMA Part Number DCIN172-3-36HT
PMA Description Bumper (3.36)
Price Call for a quote

OEM Part Number DCIN173-()-()
OEM Description ENDCAP
OEM Dasell
Lead Time Call for lead time
Improvements Over OEM Similar
Effectivity A330-202, -223, -243, -342, -343, A340-313, A380-842, B777-200

OEM Part Number DCIN173-2-11
OEM Description ENDCAP
PMA Part Number DCIN173-2-11HT
PMA Description Endcap (2.11)
Price Call for a quote

OEM Part Number DCIN173-2-16
OEM Description ENDCAP
PMA Part Number DCIN173-2-16HT
PMA Description Endcap (2.16)
Price Call for a quote



OEM Part Number DCIN173-2-22
OEM Description ENDCAP
PMA Part Number DCIN173-2-22HT
PMA Description Endcap (2.22)
Price Call for a quote

OEM Part Number DCIN173-2-53
OEM Description ENDCAP
PMA Part Number DCIN173-2-53HT
PMA Description Endcap (2.53)
Price Call for a quote

OEM Part Number DCIN173-2-69
OEM Description ENDCAP
PMA Part Number DCIN173-2-69HT
PMA Description Endcap (2.69)
Price Call for a quote

OEM Part Number DCIN173-3-36
OEM Description ENDCAP
PMA Part Number DCIN173-3-36HT
PMA Description Endcap (3.36)
Price Call for a quote

OEM Part Number DCIN173-5-67
OEM Description ENDCAP
PMA Part Number DCIN173-5-67HT
PMA Description Endcap (5.67)
Price Call for a quote

OEM Part Number DCIN173-5-71
OEM Description ENDCAP
PMA Part Number DCIN173-5-71HT
PMA Description Endcap (5.71)
Price Call for a quote

OEM Part Number	TS340-00-62
OEM Description	PLATE
OEM	Dasell
PMA Part Number	TS340-00-62HT
PMA Description	Plate
Price	Call for a quote
Lead Time	Call for lead time
Improvements Over OEM	Identical
Effectivity	A319-114, -131, A320-211, -212, -232, A321-211, A330-202, -203, -243, -303, -343, A340-311, -313, -642



OEM Part Number	289-2-027-00
OEM Description	WASTE BOX
OEM	Dasell
PMA Part Number	289-2-027-00HT
PMA Description	Wastebasket
Price	Call for a quote
Lead Time	Call for lead time
Improvements Over OEM	Similar
Effectivity	A320-211, -212

